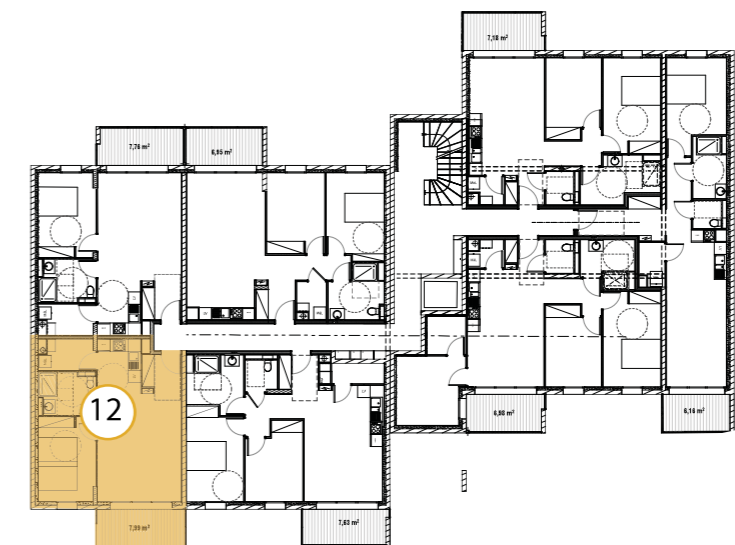
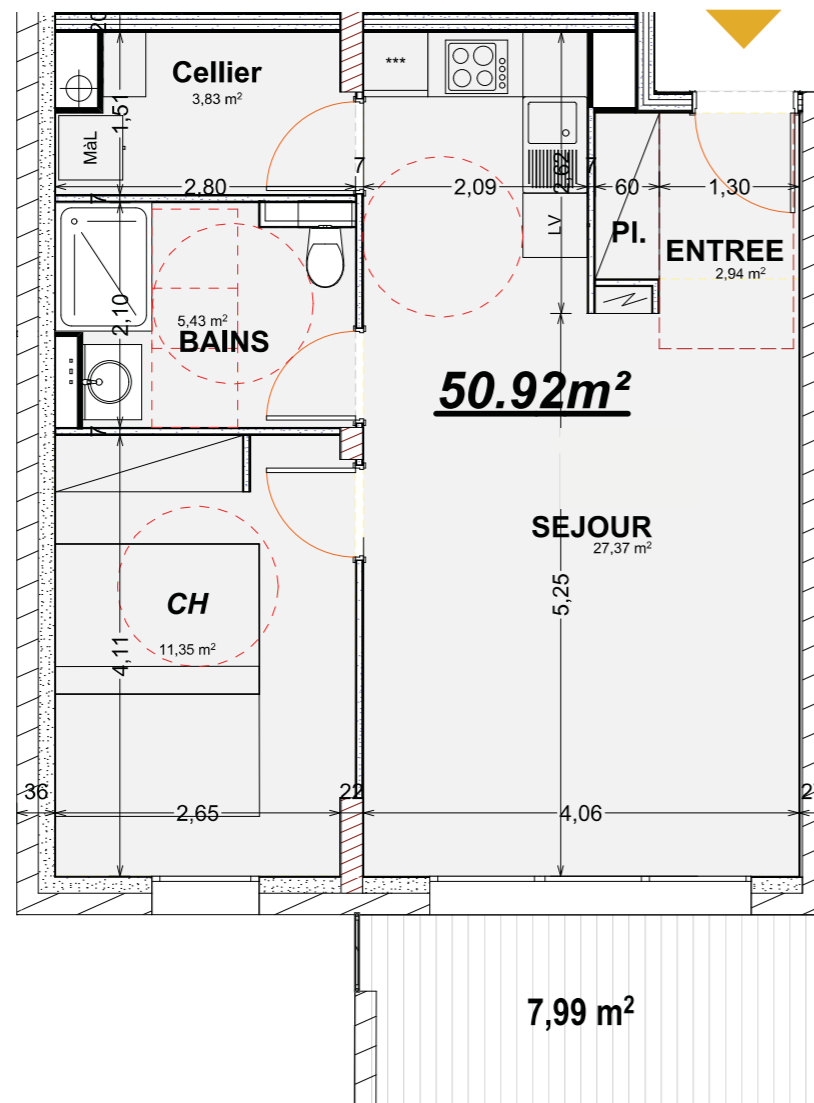


R

LES TERRASSES DE RETTEL



LOGEMENT 12 de TYPE F2 situé au R+1	m ²
ENTREE	2,94 m ²
CELLIER	3,83 m ²
BAINS	5,43 m ²
SEJOUR + CUISINE	27,37 m ²
CHAMBRE	11,35 m ²
TERRASSE	7,99 m ²
SURFACE HABITABLE	50,92 m²